

Our expertise in residential and industrial audits provides peace of mind and optimum energy value.

G.A. Ernst & Associates, Inc is committed to promoting high quality, energy efficient improvements on existing homes, commercial and industrial buildings and efficient construction of new homes.

Residential Consulting

- Improved air quality
- Temperature control for improved comfort
- Moisture control to reduce risks from dampness and humidity
- Energy efficiencies helping to manage home affordability

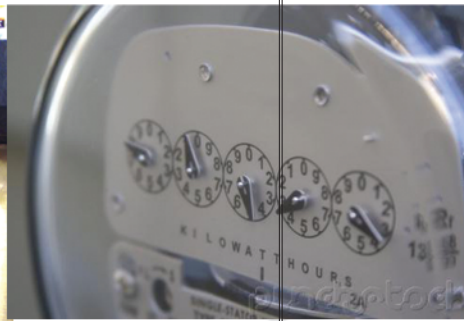
Commercial/Industrial Consulting

For far too long energy usage has been treated as "a cost of doing business," a belief held by a fair number of asset managers and financial officers. Nothing could be further from the truth. Improvements in technology prove beyond a doubt that substantial savings can convert your company's expense dollars into working capital.

New-Home Construction Consulting

For new home construction a Home Performance Consultant can work with owners and their builder to verify that the home is built to the highest standards and energy efficiency. This is done in a series of start-to finish inspections that include:

1. Building Plan Review: The consultant will review the building plans before any construction is done. This portion includes an analysis of solar orientation, a Home Energy Rating score and an opportunity to determine how the building is to be constructed.



Diagnostic tools can include:

- Blower door tests that determine the air tightness of your home and find the general location of air leaks.
- Infrared inspection to further pinpoint the location of air leaks and moisture problems.
- Carbon monoxide safety test and worst-case draft test that will determine if flue gasses are spilling into your home when the exhaust fans are on.

Our consultants do not sell any energy product or equipment.

Commercial/Industrial Energy Audits include:

- Quantify "customer specific" Demand Side Management, DSM, opportunities.
- A list of recommendations for increasing energy efficiency and conservation
- Estimated capital costs and annual energy savings
- Assistance with rebates.
- Energy efficient redesign involving documentation of existing and proposed systems
- Detailed analysis of electrical and gas charges associated with lighting, HVAC, motors/compressors refrigeration,, hot water and building envelope.

2. Framing Inspection: An on-site inspection when the building has been framed but not yet insulated. This allows the Home Performance Consultant to determine any opportunities to avoid framing and insulation related problems.

3. Insulation Inspection: An on-site inspection of the building after the insulation portion of the construction has been completed.

4. Final Inspection: The last on-site inspection which includes a blower door test to measure the air tight features of the home.